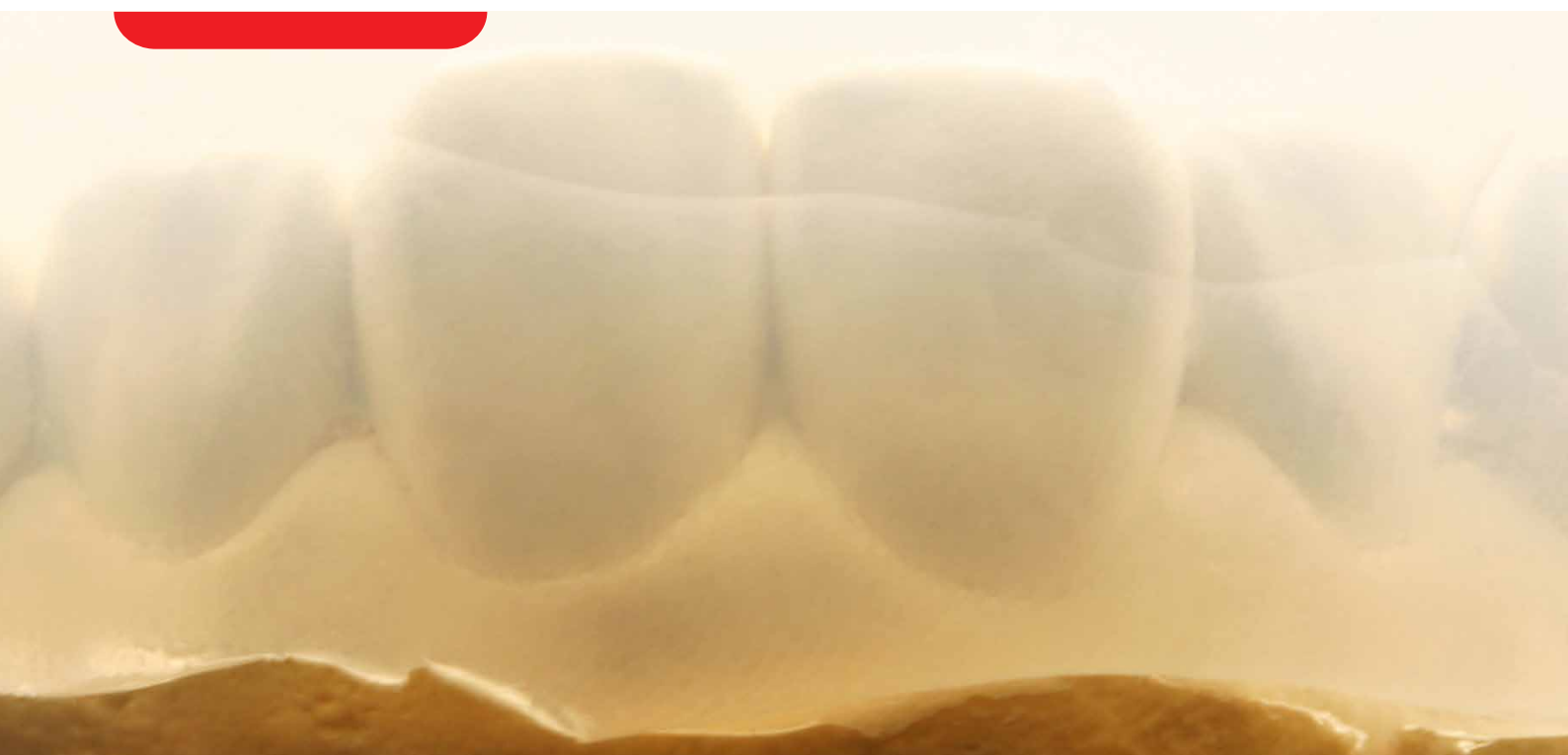


# elite glass



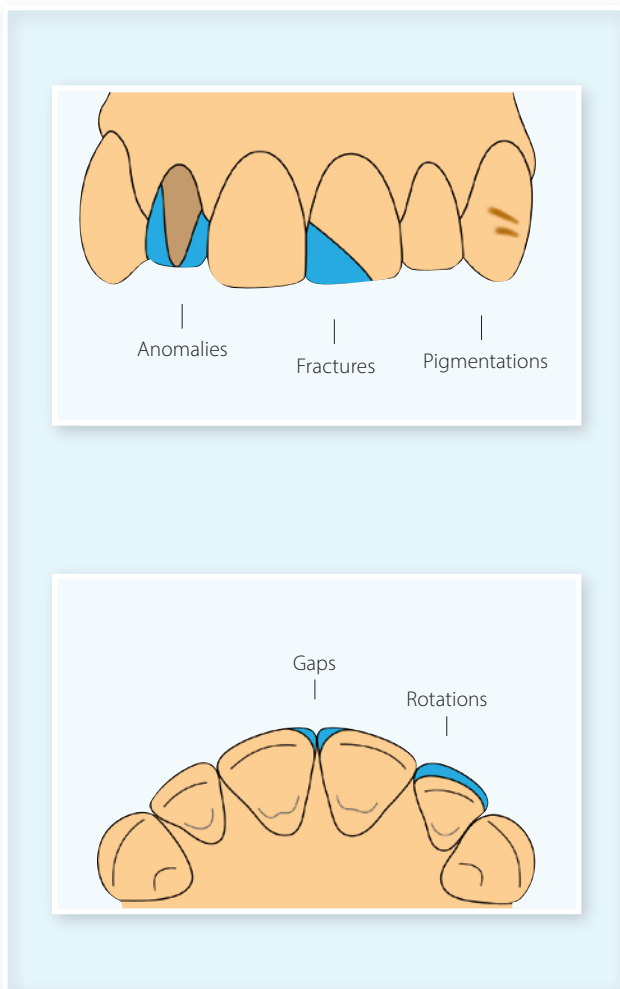
## THE CLARITY OF DETAIL

A-Silicone clear matrix material

**Zhermack**   
Dental

# Elite Glass

The A-silicone from **Zhermack** in 50 ml automix cartridges for the construction of transparent matrices, used for the direct processing of **cosmetic restorations**.



## OPERATING VERSATILITY

Elite Glass can be used in a **variety of clinical situations**, processing the matrix directly from the mouth of the patient (e.g. pigmentations) or alternatively indirectly, based on a model (e.g. fixing gaps, correcting rotations, fractures, dental anomalies, temporary crowns).

## HIGH TRANSPARENCY

The new formulation of Elite Glass ensures **highly transparent** matrices, guaranteeing the **perfect photopolymerisation** of the composite used for the restoration.

## IDEAL RIGIDITY

The ideal rigidity of the matrices created using Elite Glass ensures the **original shape** remains unaltered, and simplifies repositioning **without deformations**.

## QUALITY AESTHETIC RESULTS

The matrices created using Elite Glass allow **excellent aesthetic results** to be achieved in a **short time**, simplifying the clinical procedures.

# Direct clinical case



1. Initial case.



2. Creation of the matrix with Elite Glass: leave at least 2 mm of silicone around teeth\*.



3. Make sure there are no defects in the area involved in the impression.



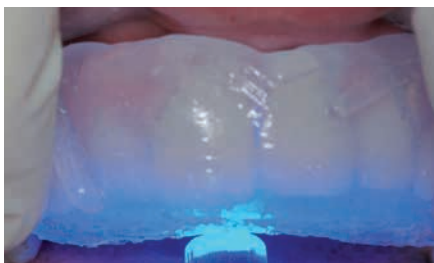
4. Preparation of the veneer.



5. Treatment of the surface\*\*.



6. Application of the composite, starting from the incisor zone and moving towards the cervical edge.



7. Repositioning the matrix made with Elite Glass in the mouth, making sure not to leave gaps between the matrix and the teeth. Photopolymerise through the matrix\*\*.



8. Finishing the composite: remove the excess material and polish\*\*.



9. End result.

\*Important: remember to trim the level of material at least when first used.

\*\*Follow the instructions provided by the manufacturer of the composite.

# Technical data

ELITE GLASS	Working time (min:s)	Time in mouth (min:s)	Setting time (min:s)
	0:40	1:30	2:10

The working time is intended from the beginning of the mixing at 23°C (73°F), the time in mouth is intended at 35°C (95°F).

## Pack types



### ELITE GLASS

Code	Setting time	Packaging
C401610	Fast Set	2 x 50 ml cartridges (Base + Catalyst) + 6 mixing tips (medium)

## Accessories

